

--	--	--	--	--	--	--	--

For Office Use –System Ref



West End Buddhist Centre, 1569 Cormack Cr., Mississauga, On, Canada L5E 2P8, Phone/Fax: 1 905 891 8412

[www.westendbuddhist.org](http://www.westendbuddhist.org)

Registered Canadian Charity # 89170 8166 RR0001. All donations are tax deductible

## New Temple Project- Material Subscription Form

Name:

Tel:

Address:

Email:

	Bloc-qty	Each Bloc-cost	Bloc-size	QTY	Amount \$
<b>Site Work</b>					
Parking lot – 53 spaces	500	\$200.00	Part space		
Landscaping - Sod	200	\$200.00	100 sq.ft		
Landscaping - Trees	30	\$400.00	1 tree		
Landscaping -Shrubs	115	\$150.00	3 shrub		
Interlocking Pavers	100	\$120.00	15 sq.ft		
Perennials, etc	8	\$120.00	60 sq.ft		
Fencing-wood	330	\$100.00	3.5 l-ft		

### Concrete

Footings / Foundation	462	\$200.00	1 c.m		
Floor Slabs	265	\$200.00	1 c.m		
Columns - Interior	6	\$8000.00	Column		
Columns - Exterior	22	\$1000.00	Column		

### Masonry

Exterior Architectural Stones	100	\$200.00	10 sq.ft		
-------------------------------	-----	----------	----------	--	--

### Thermal Insulation

Exterior Stucco Walls	364	\$225.00	15 sq.ft		
Shingle Roof	100	\$600.00	100 sq.ft		

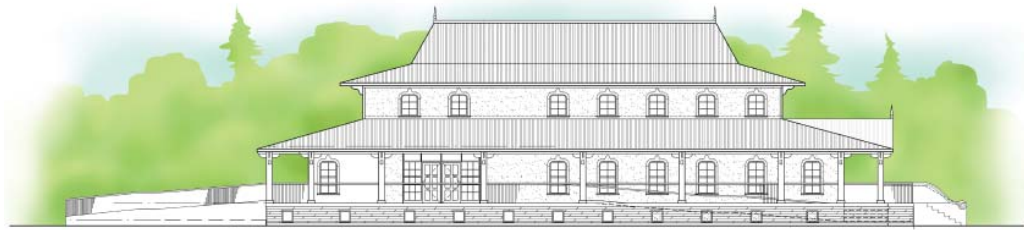
### Doors and Windows

Front Entrance - Exterior Door	1	\$10,000.00	1 door		
Secondary Entrances/Exits - Exterior Doors	4	\$2,500.00	1 door		
Interior Doors	30	\$500.00	1 door		
Windows - Basement	17	\$500.00	1 window		
Windows - Lower	20	\$1,000.00	1 window		
Windows - Upper	23	\$800.00	1 window		

Page Total

	\$
--	----

*Your support is very much appreciated- Thank you for your generous contribution!*



	Bloc-qty	Each Bloc-cost	Bloc-size	QTY	Amount \$
<b>Finishes</b>					
Interior Drywall Partitions - Shrine Area	350	\$120.00	20 sq.ft		
Interior Drywall Partitions - Monk Residence Area	200	\$120.00	20 sq.ft		
Interior Drywall Partitions - Basement Area (Kit, WR,Etc)	250	\$120.00	20 sq.ft		
Ceiling - Drywall	200	\$100.00	24 sq.ft		
Ceiling - T-Bar	80	\$100.00	20 sq.ft		
Hardwood Flooring for Shrine	63	\$320.00	40 sq.ft		
Hardwood Flooring for Monk Residence	50	\$160.00	20 sq.ft		
Tiles	175	\$100.00	20 sq.ft		

**Mechanical**

Plumbing Fixtures	30	\$500.00	part		
Hot Water Tank	1	\$2,000.00	part		
Roof Tops - HVAC 10Ton Units	1	\$20,000.00	part		
Roof Tops - HVAC 3.5Ton Units	1	\$5,000.00	part		

**Electrical**

Service Panel 200Amp/600 Volt/3P	1	\$3500.00	part		
Step Down Transformer - 75Kva.	1	\$3000.00	part		
Service Panel 110/208 Volt	1	\$2,500.00	part		
Lighting Fixtures - Shrine		\$10,000.00	part		
Lighting Fixtures - Interior General	40	\$250.00	part		
Lighting Fixtures - Exterior (Wall Packs)	35	\$200.00	part		
Lighting Fixtures - Parking (Poles)	3	\$2,000.00	part		

<b>Total from this Page</b>		<b>\$</b>
<b>Total from previous Page</b>		<b>\$</b>
<b>Grand Total</b>		<b>\$</b>

I pay by  Cheque  Cash

**Other Info:**

Donation on behalf or in memory of: .....

Would you like the Temple to perform:  Buddha Puja  Seth Pirith (Pirith Chanting)  Or .....  
on any specific date of the year \_\_\_ / \_\_\_ / (Day/Month)

If referred by a person, details of the person who referred the Temple to you.....

Can we send him or her a thank-you-note?  Yes  No

Date: .....

Signature: .....

*Your support is very much appreciated- Thank you for your generous contribution!*